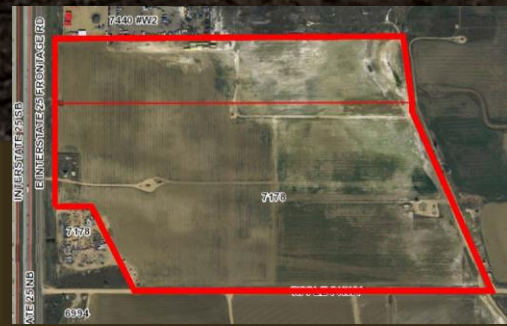


AGPROprofessionals
DEVELOPERS OF AGRICULTURE

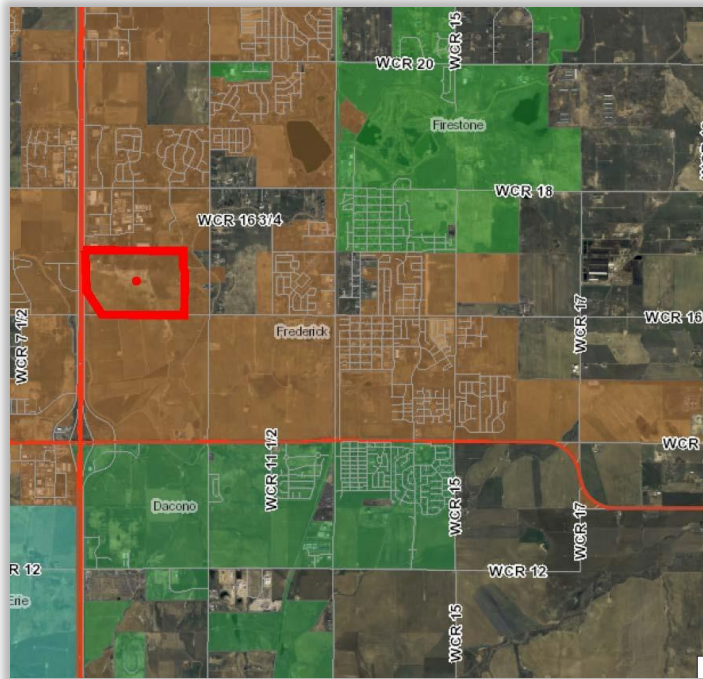
I-25 Frontage Road Property

\$3,600,000



Property Overview

Property	+/- 118.95 Acres of Frontage Road Property. This area is heavily developed with large commercial operations. Truck dealers, car dealers and furniture stores are all within a 5 mile stretch of this property. Located north of Hwy 52 along the east frontage road. The property can be easily accessed from Hwy 119 or Hwy 52
Location	Located in part of South ½ of the South ½ of Section 26 of Township 2 North, Range 68 West and part of the North ½ of the South ½ of Section 26 of Township 2 North, Range 68 West.
Taxes	2014 Taxes = \$209.48
Additional	There is a 36" main sewer line on the property and a water line on the west side of the farm. This property is zoned for Planned Unit Development (PUD).



Presented by:

RYAN HOSTETLER, ALC
Accredited Land Consultant

3050 67th Avenue, Ste. 200
Greeley, CO 80634

720.684.4111 direct
303.883.7080 cell
ryan@agpros.com

NOTICE TO PROSPECTIVE PURCHASERS: The information contained herein has either been given to us by the owner or obtained from sources we deem reliable. We have no reason to doubt its accuracy; however, we do not guarantee it. AGPROfessionals, LLC, and the seller assume no responsibility for the omissions, corrections, withdrawals, or prior sales. The prospective purchaser should verify all information contained herein. AGPROfessionals, LLC, and all other agents of the broker are or will be acting in the capacity of a Transaction Broker in the sale of subject property.