



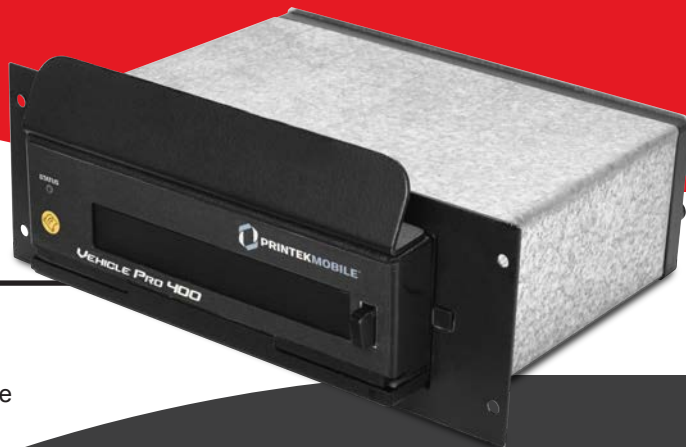
# PRINTEKMOBILE™

Everywhere. Everyway. Everytime.

## Unique design... exceptional productivity.

The VehiclePro 400 printer is uniquely designed to fit in crowded public safety vehicles. This rugged printer is packed with features to help your department workforce become more productive.

- Easy-to-read control face and simple drop-in paper loading.
- IP54 rated for water and dust resistance.
- Printer install is quick and easy, and has one cable for power and data.



## VehiclePro 400

The VehiclePro 400 is designed specifically for use in Public Safety Vehicles in either a dash or center console.

It's the first advanced printer designed specifically for Police, EMS, and Fire Department applications: perfect for all 4" or 3" ticket printing and other document needs.



### Easy To Use.

- Simplest setup - Windows drivers, and all-in-one cable used.
- Simplest Operation - Door latch, drop-in paper, paper advance, status indicator all on front face.
- Runs from vehicle power; robust, locking power connector.
- Auto ON and OFF with vehicle power.
- Rugged, durable all-metal case.
- Compact, smallest volume mobile printer.
- Accommodates 4" or 3" wide paper rolls.
- Crisp, clear, high speed print.

### Leadership that leads the way.

For over 35 years, Printek has fulfilled the business printing needs of organizations worldwide. We've led the industry with mobile printers designed to improve productivity and increase ROI. And — they include PrintekMobile's unparalleled level of customer support. Our clients say it's the best in the industry. So why not join them, and find out for yourself.



[www.printek.com](http://www.printek.com)

# Detailed Printer Specifications

## VehiclePro 400



### Printing Specifications

Printing Method: Direct thermal  
Printing Resolution: 203 dpi (8 dots per mm)  
Printing Speed: Up to 2.8 ips  
Printing Width: Up to 4.1 inches (10.4 cm)

### Fonts/Characters/Bar Codes

Fonts: A wide range of font types and sizes, from ~6 cpi to 34 cpi depending on emulation chosen, plus scaling.

International Characters: An expanding catalog available for download.

Bar Codes: Code 39, Code 128, Intlv 2 of 5, EAN08 & 13, PDF-17 and UPC, depending on emulation chosen.

Downloadable fonts, graphics, logos and additional bar codes.

### Connectivity

Standard: RS232, USB  
(optional cable required)

Wireless options:

Bluetooth®

Complete Bluetooth® 2.0 Stack including:

Protocols: L2CAP, RFCOMM, SDP

Profiles: GAP, SDAP, SPP

Class 2 operation

Bluetooth® SIG QD ID: B012394

RFC2217 & EN60601 compliant

### Software

Drivers and Utilities: Drivers for XP, WIN 7, WIN 8, Compatible with Windows CE/Pocket PC, Windows Mobile, Android & iOS SDK's.

Printer Setup Program provides convenient configuration via a Windows Interface.

Emulations: Emulates many popular printer brands and languages including O'Neil, Zebra CPCL and ZPL, Exttech, IPL, MPL, E-Sim and Printek Mt3. Can be upgraded as new emulations become available.

### Print Media

Paper Type: Direct Thermal Roll

Roll Size: Maximum roll diameter 2.00" (5.1 cm), roll widths from 2.9" to 4.125" (7.4 to 10.5 cm)

Roll Capacity: Approx. 94' (28.6 m), or approx. 188 - 6" long receipts (with 2.4 mil thick media), max.

Core Size: 0.75" Recommended (1.9cm).

### Power Management

12-36 VDC in-vehicle power.

Auto ON/OFF with vehicle power

### Physical Specifications

Fits standard console, 3" high panel with a 5" depth.

Weight: 36 ounces with face panel.

### Environmental Specifications

Operating Temp: -4° to 122°F (-20° to 50°C)

Storage Temp: -4° to 140°F (-20° to 60°C)

Humidity: 10% to 90% RH (non-condensing)

Rated IP54 per IEC 529.

### Operator Controls and Indicators

LED indicator for general status.

Button for paper feed.

Latch for paper compartment door.

All located conveniently on front face.

### Memory Capacity

2MB Flash, 1MB SRAM. Standard memory supports large and graphic intensive print jobs.

### Durability and Reliability

Case is all metal, consistent with heavy duty Police/Fire/Rescue equipment.

MTBF: >13 million print lines (Approx. 3,500 paper rolls)

### Regulatory Approvals

CE mark, UL listed AC adapters, E-mark

### Warranty

Two-year printer warranty on the entire printer—case and print head included.

Optional extended warranty available, ask your sales rep for details.

### Options and Accessories

• Media in case quantities.



**PrintekMobile's comprehensive warranty covers the entire printer!**

### Contact:

Glacier Computer - 10 Northern Blvd - Amherst, NH 03031  
Toll Free: 866.724.6257 - sales@glaciercomputer.com  
www.glaciercomputer.com



**PRINTEKMOBILE™**  
Everywhere. Everytime. Everytime.

www.printek.com