

# Back2Back 12"x24"



WHITE FRONT/BACK



BEIGE BACK



GREY FRONT

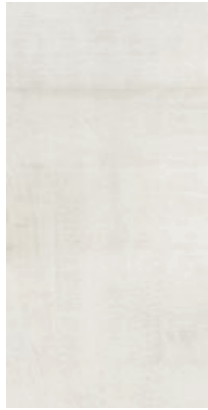
# Back2Back 12"x24"



Dry - Pressed Ceramic Tiles ISO 13006 : 2012 Annex G - UNI EN 14411 : 2012 Annex G - Bla GL



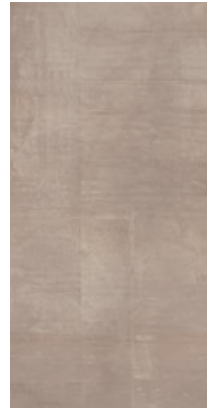
WHITE  
Front 12"x24"



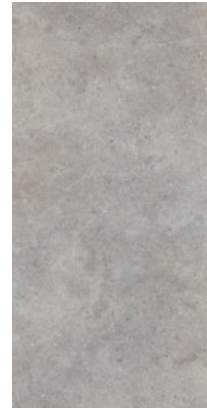
WHITE  
Back 12"x24"



BEIGE  
Front 12"x24"



BEIGE  
Back 12"x24"



GREY  
Front 12"x24"



GREY  
Back 12"x24"

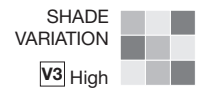
## PACKING AND WEIGHT

SIZE	PIECES / CARTON	SF/CARTON	CARTON/PALLET	SF/PALLET	SF/PIECE	LBS/CARTON
12"x24"	6	11.6	40	464.8	1.9	53.5

## TECHNICAL FEATURES

	STANDARD	VALUE
<b>Flatness</b>	UNI EN ISO 10545/2	± 0,26% / ± 1,5mm
	ASTM C485 Warpage	
	Calibrated ± 0,75% (max ± 0,09 in) Rectified ± 0,40% (max ± 0,05 in-size ≤ 60cm) - (max ± 0,07 in-size > 60cm)	- ± 0,25% (max ± 0,05 in-size ≤ 60cm) - (max ± 0,07 in-size > 60cm)
<b>Water absorption - Average value expressed in %</b>	UNI EN ISO 10545/3 ≤ 0,5 % - ASTM C373	Compliant
<b>Modulus of rupture</b>	UNI EN ISO 10545/4	≥ 50 N/mm <sup>2</sup>
<b>Breaking strength</b>	UNI EN ISO 10545/4 ASTM C648	≥ 2000 N 700 LBS
<b>Frost resistance</b>	UNI EN ISO 10545/12 ASTM C1026	Compliant Unaffected
<b>Chemical resistance to high and low acid and basic concentrations</b>	UNI EN ISO 10545/13 ASTM C-650	ULA-UHA-UA Unaffected
<b>Stain resistance</b>	UNI EN ISO 10545/14 CTI 81-7D	5 No Evident Variation
<b>Slip resistance</b>		Naturale Lucidato
	DIN 51130	R10 -
	DWIN 51097	C (A+B+C) -
	ANSI A 137.1- 2012 DCOF (Section 9.6)	Dry: 0,67* - Wet: 0,80* Dry: 0,74** - Wet: 0,42**
	B.C.R.A.	≥ 0,40 -

\* Values obtained with certificate n° 3638/2012/I. Date 10/26/2012  
 \*\* Values obtained with certificate n° 4327/2012/I. Date 12/20/2012  
 For further information on technical specifications, please consult our up-dated general catalogue.



16610 Gale Ave. • Industry, CA 91745  
 Tel. (626) 961-0051 • Fax (626) 336-2217