

Xtra-PC Quick Start Guide

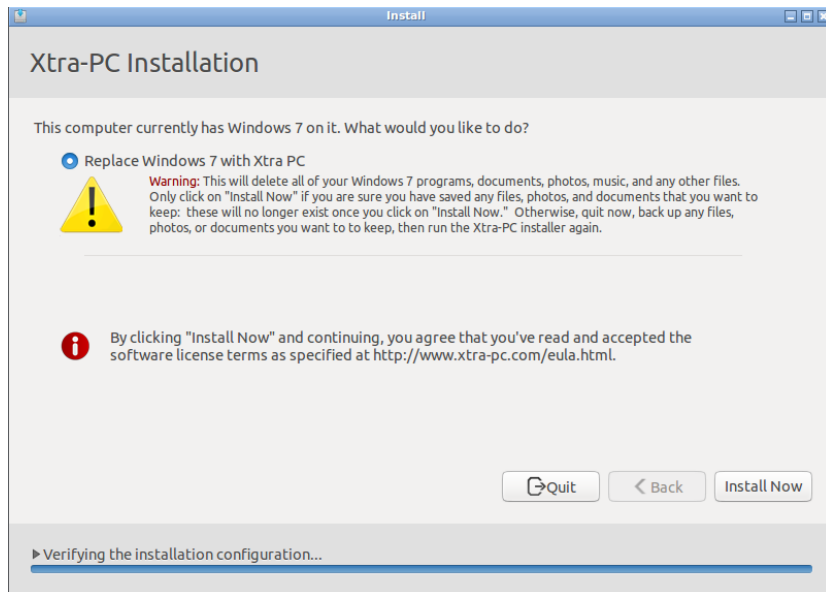
How to install Xtra-PC on your computer

1. Put the Xtra-PC DVD into your DVD drive. (Note: Xtra-PC is a new operating system, not a software application, so there are no .exe files to run from the DVD within Windows. Just insert the DVD.)
2. Restart (reboot) your computer.
3. You will see the installation menu for Xtra-PC. If you don't see this menu and your computer loads as it always has, then your computer isn't set to boot from the DVD, and you'll need to change your computer settings so that it will boot from the Xtra-PC DVD. For simple instructions on how to do this, refer to the FAQ section in the user guide.



4. Select "Install Xtra-PC on your computer. " After selecting this, it can take up to 15 seconds for the screen to change.

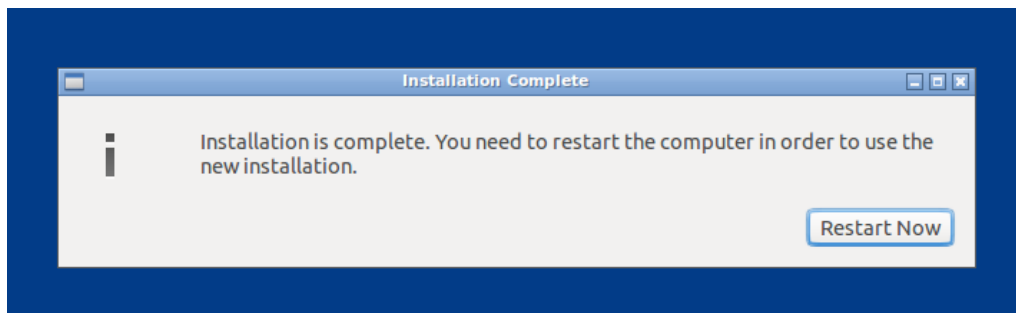
5. Wait until you see the “Xtra-PC Installation” screen. This could take as long as



five minutes.

6. Click on “Install Now” and Xtra-PC will install. Depending on your system, this can take from 10-60 minutes.

7. When you see this screen, installation is complete:



8. Once you click on “Restart now,” your system will reboot. After your system reboots, follow the on-screen steps to complete your installation.

For more detailed steps, see the complete User Guide.